

DDM



Flow Turbine Pickoff

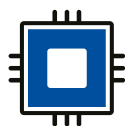
Smart-Pickoff ASP Series



Calibrated frequency output (TTL)



miniaturized



Identification memory

Functional description

DDM Smart-Pickoff ASP series is an intelligent pickoff for speed sensing of flowmeter turbine blades. Suitable mounting kits are available for easy installation to almost any flow turbine meter. The ASP housing is extremely miniaturized to fit even at applications where space is limited. The electrical connection comes with a high temperature cable and freely adjustable orientation. Turbine speed is detected without drag and converted to a high level digital TTL output. The ASP requires a DC supply voltage to operate. Carrier frequency amplifiers commonly used to run turbine flow meters are no longer required to perform a flow meter traceable calibration. A fast response temperature probe is providing media temperature readings for viscosity correction. Flow Turbine parameters and calibration data are stored in an internal memory. Combined with the intelligent VCA and VCA-T flow computer series we got self-parameterizing flow measurement systems which are linearized and viscosity corrected.

Input Frequency

0.5 to 2,000 Hz

Output Frequency

2 kHz (TTL) max.

Response time

depending on flow turbine used

Temperature probe

Thermocouple Type T (DIN EN 60584 Kl.2)

Excitation voltage

9 to 32 V DC reverse polarity protected

Power consumption

≤ 8 mA

Materials

Stainless steel housing, welded
High temperature epoxy, thermally conductive

Temperature range

Media -40°C to +150°C

Ambient -40°C to +125°C

Process pressure at +20°C

depending on flow turbine used

Electrical connection

High temperature cable, length 50 cm
with push-pull connector size 0

Degree of protection

IP67

EMC

EN 55011

EN 61000-4-2 to EN 61000-4-6

Calibration certificate

for turbine meter with ASP Smart-Pickoff fitted

Accessories

High temperature cable assembly for VCA and

VCA-T flow computer, length 5 m

Mounting kit according to type of flow turbine meter

More accessories see separate data sheet

Dimensions (mm)

