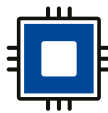
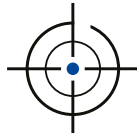


Pressure Sensor

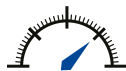
PV-22 TEDS Series



Identification Memory



Narrow total error band



High Resolution

Description

The PV-22 TEDS series has been designed to withstand the extreme temperature, vibration and shock levels of automotive test applications. The fully welded stainless steel pressure module provides excellent media compatibility, high over-pressure and burst ratings. The temperature compensated signal is a customer specific high level output voltage ideal for interfacing with data acquisition hardware. The PV-22 TEDS series can be powered directly from the vehicle battery, even during the start cycle. It is suitable for measurements where temperature cannot be controlled and reliable high performance measurement is required.

Pressure Ranges (FRO) - Gauge

100 mbar to 150 bar (any zero based range between)
Bi-directional from ± 100 mbar

Pressure Ranges (FRO) - Absolute

2 bar to 150 bar (any zero based range between)

Overpressure

200 / 400% depending on pressure range (FRO)

Output Signal (3-wire)

0 to 5 V
1 to 6 V

Load Impedance

> 5 kOhm

Measurement Performance

Valid for Pressure Ranges ≥ 2 bar

Total Error Band within Operating Temperature Range

(includes non-linearity, hysteresis, repeatability, zero and span settings, thermal shift on zero and span)

Standard	$\leq 1\%$ FRO
optional	$\leq 0.5\%$ FRO
optional	$\leq 0.25\%$ FRO

Stability

$\leq 0.1\%$ FRO per year (typically)

Response Time

< 0.5 ms

Zero and Span Setting

Digital adjustable, optional

Operating Temperature Range

-40°C to $+125^{\circ}\text{C}$

Supply Voltage (V_s)

8 to 32 VDC

Current Consumption

≤ 5 mA

Material of Wetted Parts

1.4404 and 1.4435

Electrical Connection

LEMO HGA.0B.306

Pressure Connection

M10x1 male length 12 mm, 80° internal cone

On request

M10x1 female	
M10x1 male	length 8 mm, flat end
M14x1.5 male	60° internal cone
7/16-20 UNF	74° external cone
G1/4 male	DIN 3852-2 form A
Rectus 21 (male)	

Protection Rate

Depending on mating connector

Weight

75 g, app.

EMC

12 V/m 80 MHz–2 GHz to DIN EN 61326 (A)

Vibration

DIN EN 60068-2-64 Grade 1

TEDS

acc. to IEEE 1451.4:2004, Template 30

Electrical Connections

Output	Function	LEMO HGA.0B.306
Volts	+ V_s	4
	+ Output	1
	- V_s	2+5
	TEDS	3
	Service	6

Dimensions (mm)

Thread	A	B	C
M10x1 length 12 mm	12	45	3

